



processobserver

Total Quality Control

Complete solution: Sensor, software, data storage, offline tools

Process control where the process happens

Real time monitoring through the fiber, contact free, non destructive

100 % traceability

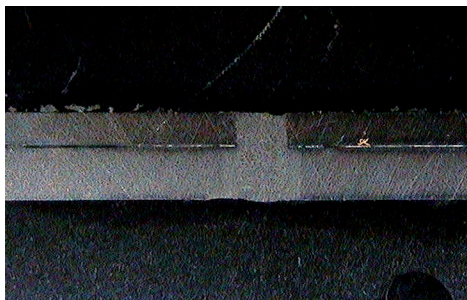
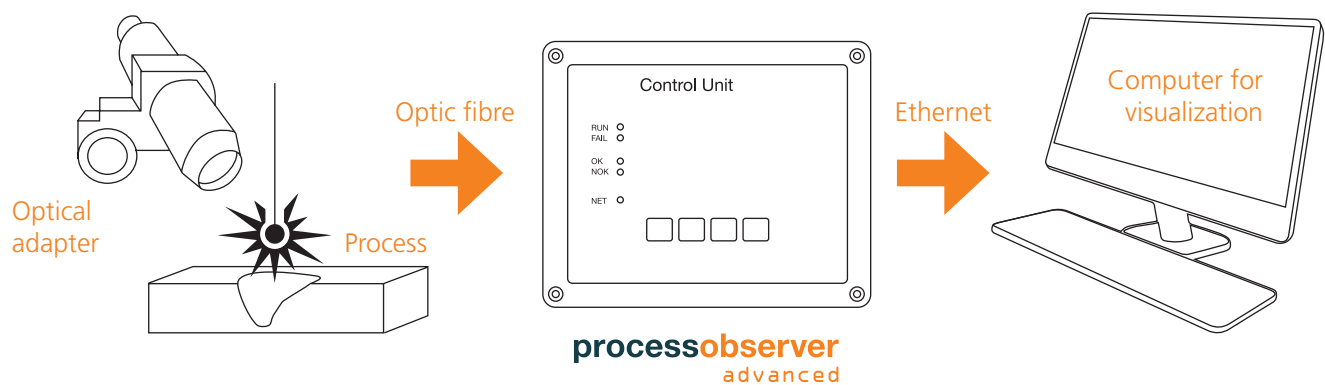
Big data store, reporting, statistics, trend analysis

ENGINEERING QUALITY WORLDWIDE

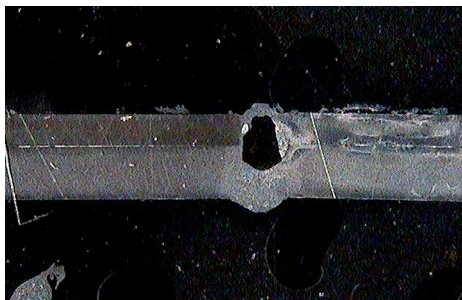
plasmo

processobserver advanced

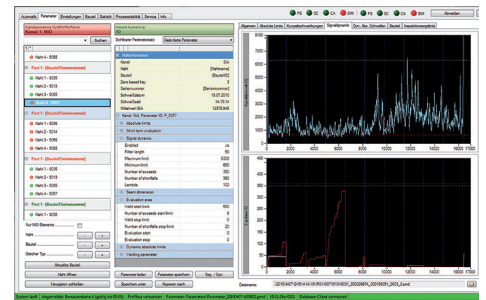
Optical sensor inputs for optic fibre	2
Data aquisition	analogue
Datarate for calculation of characteristics and OKNOK	type: 2kHz
prepared for adjustment control (hard real-time)	yes
16bit 24V digital SPS EAs	optional
Devicenet	optional
EthernetIP	optional
RSLink	optional
Profinet	optional
Profibus	optional
Interbus	optional
TwinCAT ADS	optional
database connection	yes
rework visualization	yes
statistical data analysis	yes
Industrie 4.0 ready	yes



Correct welding. The result of the destructive test is OK.



Defect weldseam. The evaluation of the work-piece is NOK = not OK.



A comprehensive GUI allows even inexperienced users to configure the system efficiently and quickly based on their needs using Windows.

plasma USA LLC
44160 Plymouth Oaks Boulevard
Plymouth, MI 48170
USA

Telephone: +1 734 414 79 12
Telefax: +1 734 414 58 99
E-Mail: sales@plasma-us.com
Web: www.plasma-us.com

